

## APR Core Support Suede Seat Breeches



**Brand:** Applied Posture Riding

**Product Code:** 1011

**Availability:** 62

**Weight:** 740.00g

**Dimensions:** 36.00cm x 20.00cm x 6.00cm

**Price: \$55.00**

**Ex GST: \$50.00**

### Short Description

**Suede is not in fashion so I am selling all Suede breeches**

High Waist, Wide Waist, Inner Core and Back Support Waistband

Lightweight microfiber fabric, 280g full stretch suede seat.

The most comfortable breeches you will ride in!

**+Postage**

### Description

High Waist Wide Waist Core Support Back Support New Design Jodhpurs for women with a tummy.

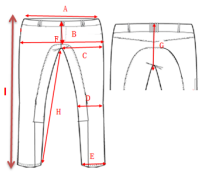


This is a brand new product to Applied Posture Riding and exclusive to APR

- The waistband has been designed to fit at your waist, not on your hips.
- The extra-wide waistband prevents it from rolling down and cutting you in half.
- The front segment of the waistband sits at your belly button for core support.
- The rear segment sits at your waist supporting your lower back.
- There is an extra wide segment across your buttocks to allow freedom of leg movement
- The internal reinforced elastic "Core Support" waistband supports you all the way around.
- The waistband has wide 10cm belt loops for a belt or can be removed for looks.
- The belt loops allow space to wear the "Core Sensory Belt " for added core support
- You can also buy these without the belt loops
- The lower leg has a sock finish adding comfort and even support around the calf muscle.
- Black only (at this stage)
- Suede seat uniquely designed with "gaps" to provide tension release when moving.
- Full stretch 280 g light microfibre fabric with a suede seat
- Sock finish with Lycra for greater comfort and support
- Three Hook and eye clasp to join the waistband at the front
- Small front zip fly

- Twin side zip front pockets
- Left logo
- Sizes Australian 10,12,14,16,18.

size chart(cm)					
European size	38	40	42	44	46
Australian size	10	12	14	16	18
A-waist	72	76	80	84	88
B-hips	88	92	96	100	104
C-thigh circumference	50	52	54	56	58
D-knee circumference	34	35	36	37	38
E-lyra leg open	22	23	24	25	26
F-front& back rise include waist	66.5	68	69.5	71	72.5
H- inside length	69	70	70	71	71
I- leg length include waist	93	94.5	95	96.5	97



## Product Gallery



